

ITEM 11. STREET EVENTS - 2016 SYDNEY MARDI GRAS PARADE

TRIM RECORD NO: 2015/610236

RECOMMENDATION

It is recommended that the Committee endorse the temporary road closures for the Sydney Mardi Gras Parade on Saturday 5 March 2016 subject to the following conditions:-

- (A) The applicant must comply with the temporary road closures conditions as stipulated in Schedule B of this agenda.
- (B) The applicant must contact the Surry Hills Police to discuss deployment of user pay police for the event.
- (C) The applicant must contact the City's Venue Management Unit to discuss the event.
- (D) The Traffic Management and Traffic Control Plans are agreed to in principal and to be finalised through the Working Group established by Premiers and Cabinet's Community Engagement and Events Division with representative from the Police, Transport Management Centre (TMC), Roads and Maritime Services (RMS), Sydney Buses, Council and Event Organisers.

DECISION

BACKGROUND

Sydney Gay and Lesbian Mardi Gras Ltd has applied for the temporary road closures of Oxford, Flinders, Liverpool and College Streets and short sections of adjoining streets for the 2016 Sydney Mardi Gras Parade on Saturday 5 March 2016.

COMMENTS

The Sydney Mardi Gras Parade is an annual event that requires the closure of City streets and traffic detours around the parade route.

The Parade Route will remain the same as 2015. College and Liverpool Streets will be used as the Start Area i.e. as a form-up area for the floats and participants in the Parade. Due to light rail works, the impact on College Street needs to be minimised therefore the parade floats will form up in Yurong Parkway prior to accessing College Street.

The Reserve Seating will be located in Flinders Street between Short and South Dowling Streets, which require rolling lane closures in this vicinity of Albion Street to allow for set-up arrangements.

The official End Area for the parade is the corner of Moore Park Road and Flinders St. Due to light rail works the floats will proceed along Moore Park Road to Driver Avenue and then de-rig in the Kippax Lake Car Park Area instead of the Bus Roadway (as in previous years).

The Premiers and Cabinet's Community Engagement and Events Division has established an Events Operations Working Group with representatives from the Police, Transport Management Centre (TMC), Roads and Maritime Services (RMS), Sydney Buses,

Emergency Services, Royal Botanic Gardens, Sydney Ferries, Sydney Trains, Council and Event Organisers.

Road Closures

Liverpool Street between Elizabeth and College Streets

College Street between Park and Liverpool Streets

Oxford Street between College Street and Darlinghurst Road

Flinders Street between Oxford Street and Moore Park Road

Moore Park Road between Oatley Road and Flinders Street

Route and Time of Event

Northern side of Oxford Street, Darlinghurst commencing at Whitlam Square, turn right at Taylor Square into the eastern side of Flinders Street until Moore Park Road and into Anzac Parade via the bus roadway in Centennial Park.

Sections of the route will be closed at various times, which depends on set-up of barricading while considering traffic and pedestrian movements. The Parade will start at 7.00pm and finish at 10.30pm approximately.

All affected roads will be reopened to traffic at 4am on Sunday 6 March 2016 (approximately). Typically, roads will be handed back earlier than this time, once post parade clean up is complete.

CONSULTATION

The Applicant will be required to notify affected residents and stakeholders as stipulated in Schedule B.

FINANCIAL

Not applicable as Sydney Gay and Lesbian Mardi Gras Ltd is a not-for-profit organisation which is exempt from fees as stipulated in the current Fees and Charges.

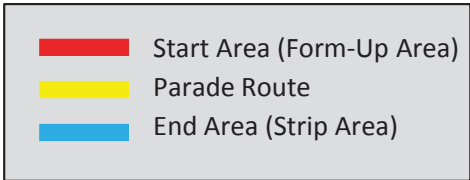
ATTACHMENTS

Street Events - 2016 Sydney Mardi Gras Parade

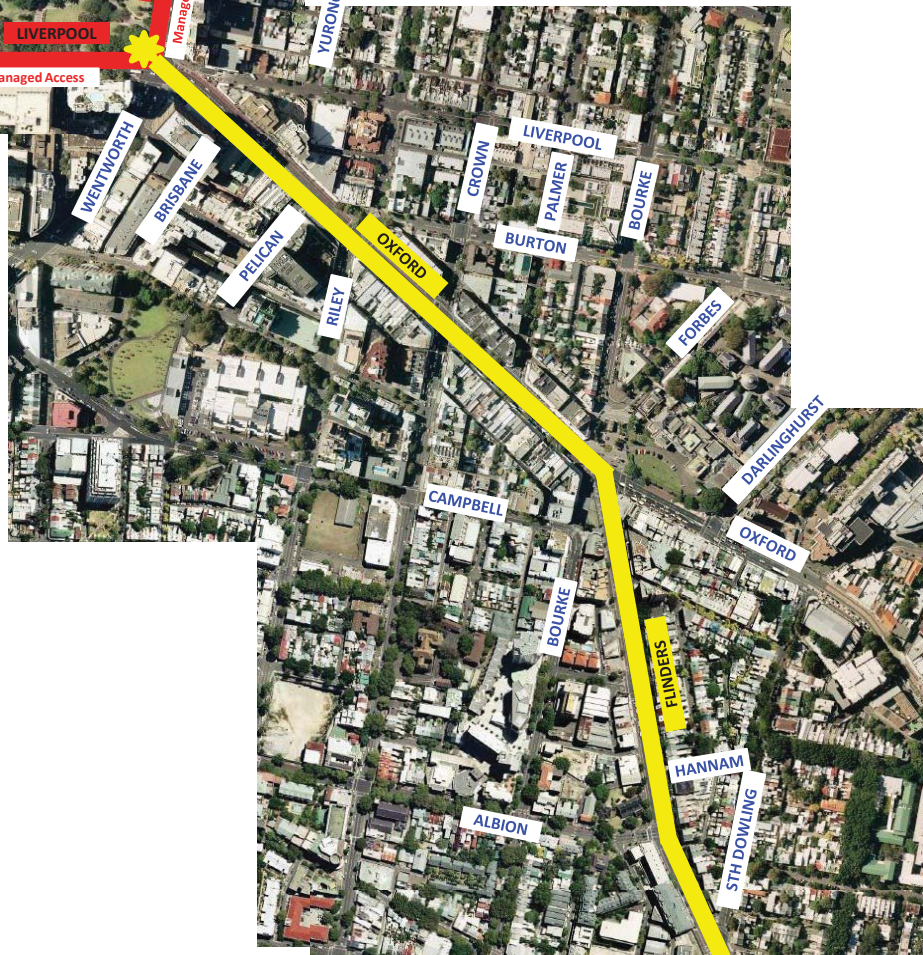
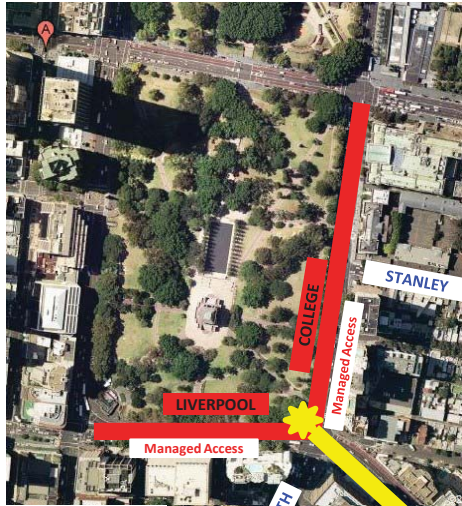
Joseph Gomes - Area Traffic Engineer

Sydney Mardi Gras Parade Route 2016

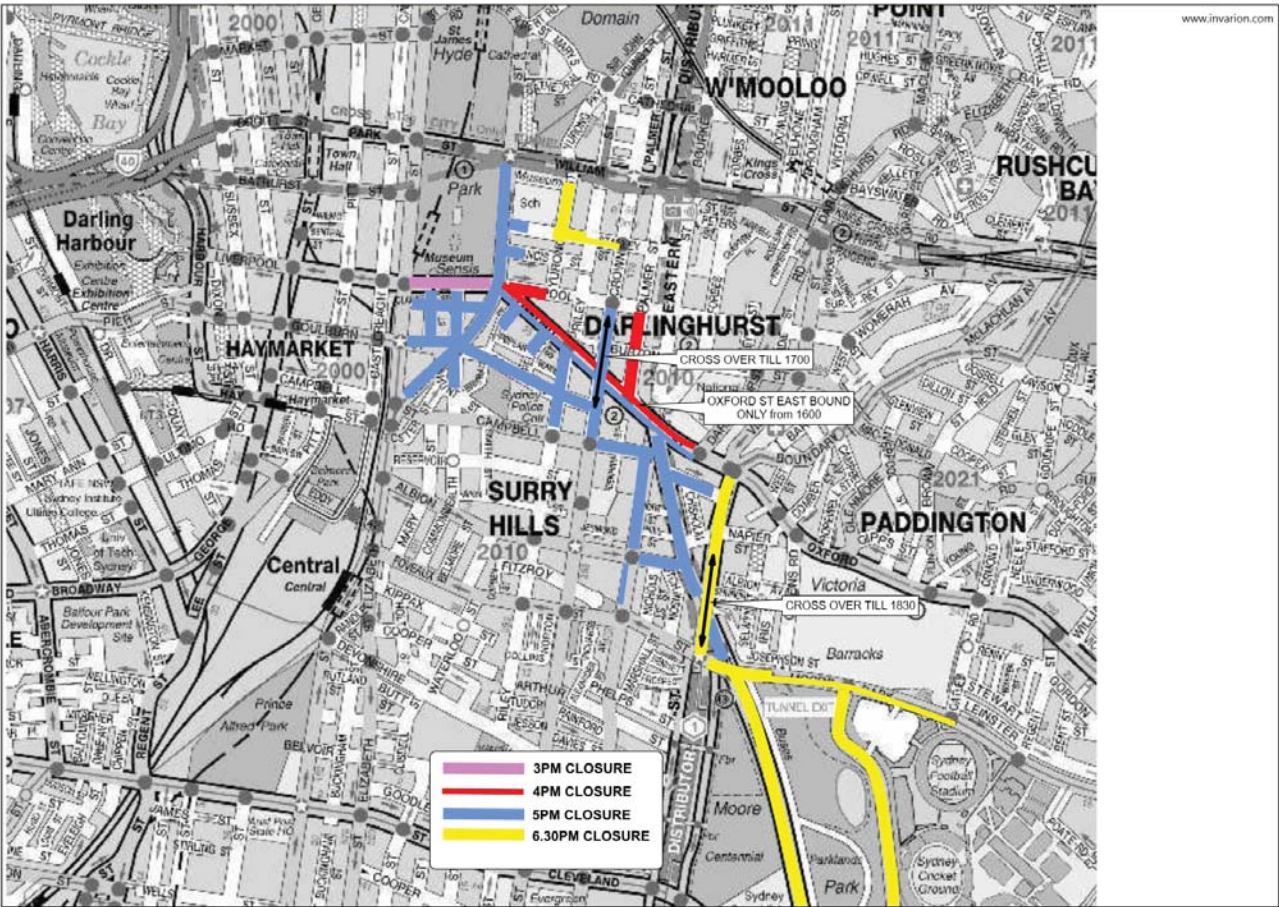
5th March 2016



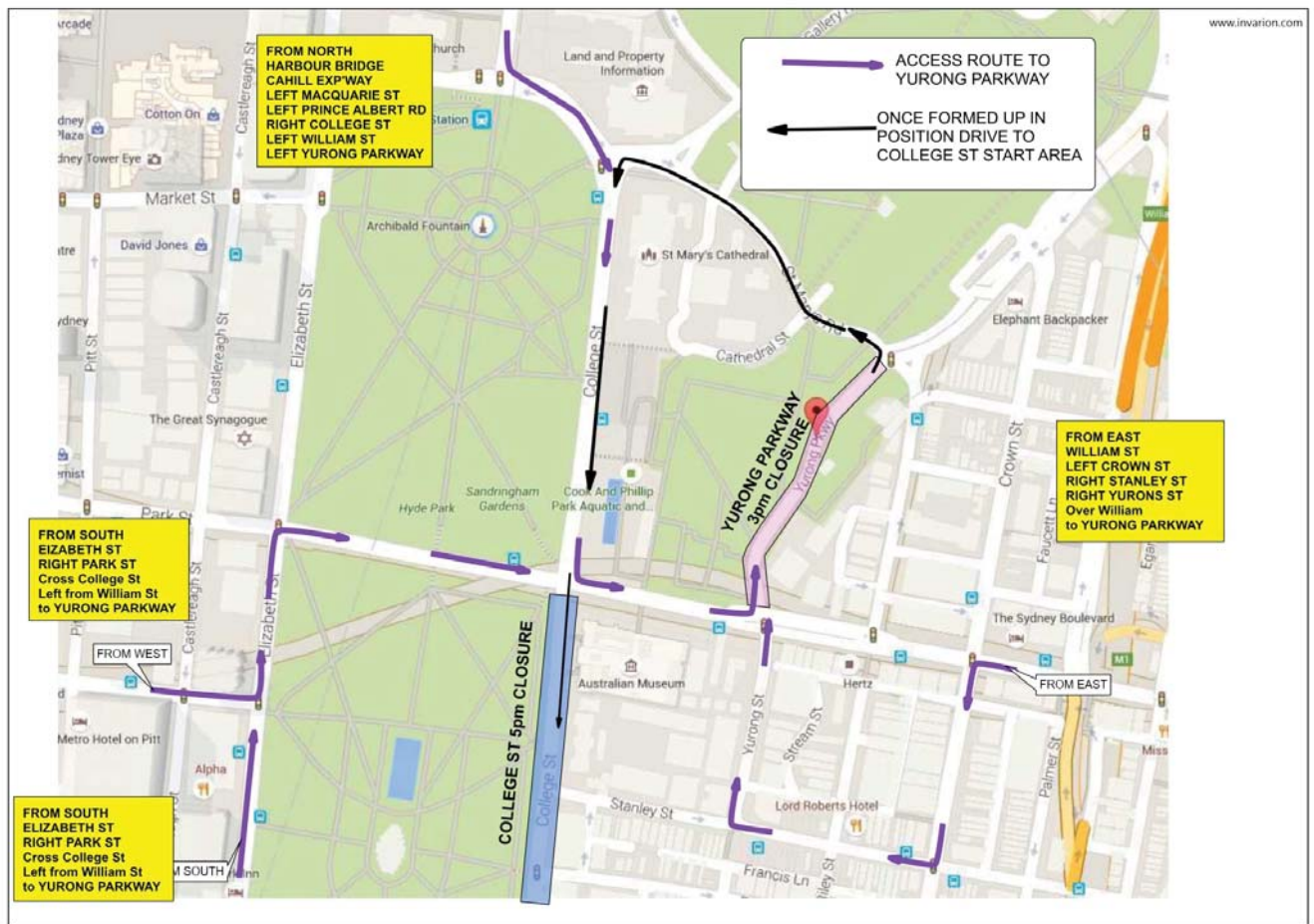
- Start Area (Form-Up Area)
- Parade Route
- End Area (Strip Area)



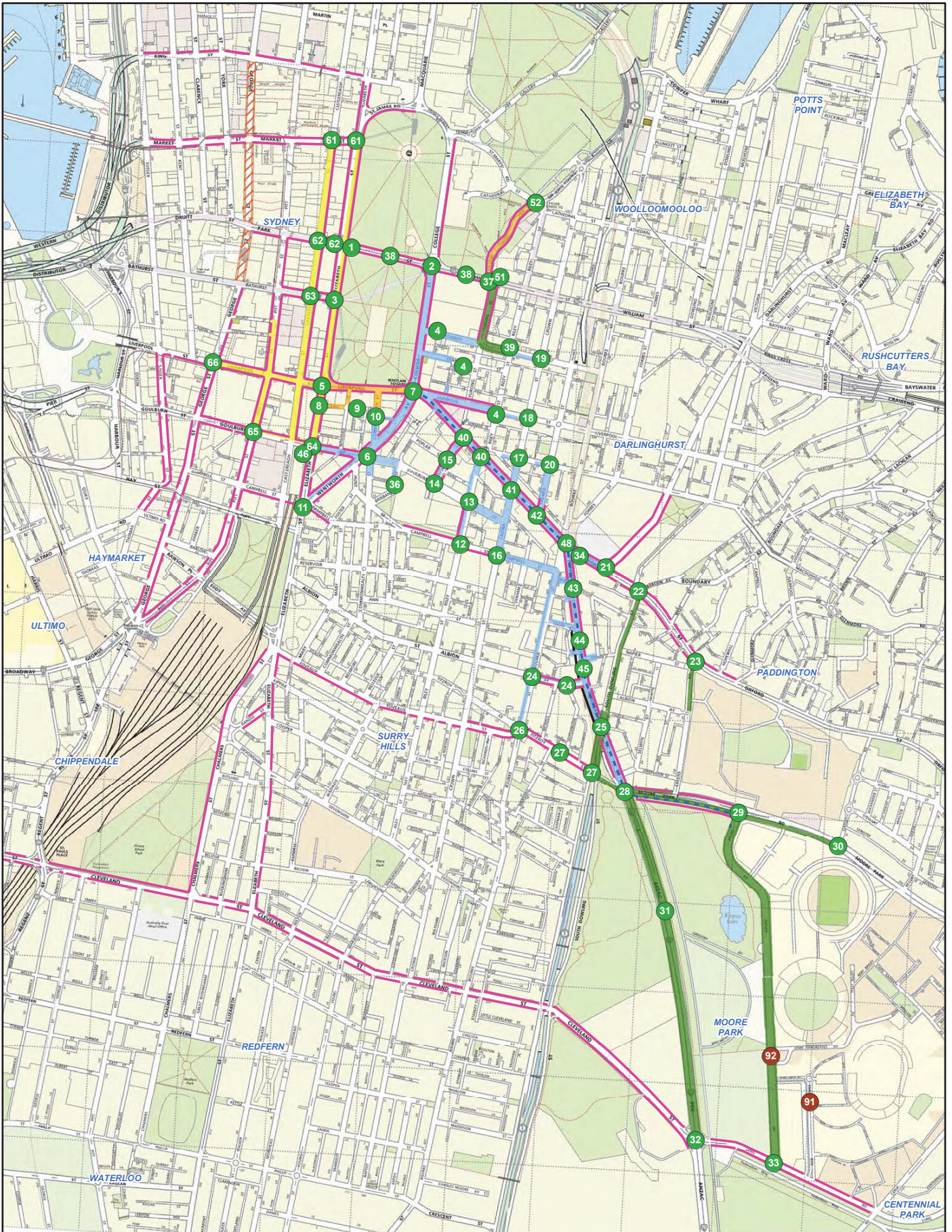
PROPOSED ROAD CLOSURES



FLOAT ACCESS ROUTE



Mardi Gras - Saturday 5 March 2016 - Road Closures & TCP Locations



- TCP Locations
- Mardi Gras Party TCP Locations
- Event Route
- Clearway 12midnight 4 March to 4am 6 March
- Clearway 12midday 5 March to 4am 6 March
- Road Closure from 3pm
- Road Closure from 5pm
- Road Closure from 6:30pm
- Road Closure from 9pm
- Light Rail Permanent Closure



0 0.1 0.2 0.4 0.6 0.8
Kilometres

Map by Major Events Section, Transport Management Centre Eveleigh NSW.
Base data © Copyright Melway Publishing 2015. Date issued: November 2015
(File: \ARCGIS mxd\MardiGras TCPs 2016.mxd)

Copyright Melway Publishing 2010
Reproduced from Sydney Edition 15 with permission